

What's **New**



Digital Remote Fuel Pressure Gauge Set

The Digital Remote Fuel Pressure Gauge Set from **Waekon** includes, in addition to the T2001 Remote Gauge, all hoses, quick disconnect couplers and adapters (male & female) needed to access the fuel supply of the fuel injection systems up to 1996 domestic and imported vehicles (annual updates kits offered). Extensive research has provided a uniquely detailed Instruction Manual & set of Vehicle Application Look-up



Tables which outline specific guidelines for the application and usage of the manifold and adapters provided in the kit. Tables are vehicle specific and provide pressure readings and ranges needed for the diagnosis of fuel injection problems. Conversion charts and illustrations are included to aid in troubleshooting fuel injection systems. Other kits available include the Domestic & Foreign Master kits (FIDM01-D & FIFM01-D) and the Domestic & Foreign Basic Kits (FIDB01-D & FIFB01-D). All kits are also available with an Analog Gauge (FIGM01-A, FIDM01-A, FIFM01-A, FIDB01-A, & FIFB01-A).

Waekon
Circle No. 200

Refrigerant Management Equipment



Fluoro Tech, Inc. has announced their new FM4000 series refrigerant management equipment along with their recently formed partnership with DuPont. The FM4000 Series is comprised of three models. The Model 4000-134 processes R-134a. The Model 4000-12 processes R-134a and the Model 4000-12-134 is a single circuit dual machine processing both R-12 and R-134a. The DuPont Model 4000-134a processes SUVA® 134a. The FM4000 Series' powerful onboard microprocessor allows it to recover, recycle, recharge & flush automotive A/C systems with ease. In addition, its refrigerant management system records all refrigerant usage data and records this data for the last 200 jobs. The FM4000 features an LCD screen that walks you through each step, allowing even inexperienced technicians to immediately use the FM4000 with no prior training. The FM4000 is available in many languages, including English, Spanish, French, Italian, Japanese, Korean, and Chinese, with other languages available upon request. Fluoro Tech produces a complete line of automotive A/C service equipment including its lightweight portable FM3000 and FM3600R series recovery/recycling systems.

Fluoro Tech, Inc.
Circle No. 201

Gold Medal Limited Edition Tool Storage Unit

With its extensive security, convenience features and striking patriotic artwork, the Gold Medal Limited Edition tool storage unit from **Snap-on Tools Company** allows top technicians to reward themselves with one of the highest quality storage units in the industry while proudly displaying their commitment to excellence. Designed for elite automotive service professionals, the Gold Medal Limited Edition's top chest depicts an American eagle soaring dramatically in front of a waving stars-and-stripes. A seal on the roll cab proclaims this unit "A Tribute to Excellence." The unit was created by combining two of the company's most popular tool storage chests, the KRL7003 roll cab and the KRL1203 top chest, and offers unprecedented security and convenience features. A high-security tubular locking system and non-slip drawer liners, each new to the industry, keep tools safe and in place. As with other Snap-on® tool storage units, the Gold Medal Limited Edition offers exclusive Lock 'n Roll® drawers to prevent accidental opening when the unit is being moved. Double-wall steel construction ensures durability. A portable tote tray in the roll cab offers unprecedented convenience with a pull-up handle for carrying tools to a job; the chest also features an easy-to-clean, protective rubber mat when the work is done. At 66-1/2 inches, the Gold Medal Limited Edition provides easy access to drawers and compartments and an exclusive design feature allows technicians to opt for keyed-alike locks. Once unlocked, extra-deep drawer pulls allow for easy opening.



As with other Snap-on® tool storage units, the Gold Medal Limited Edition offers exclusive Lock 'n Roll® drawers to prevent accidental opening when the unit is being moved. Double-wall steel construction ensures durability. A portable tote tray in the roll cab offers unprecedented convenience with a pull-up handle for carrying tools to a job; the chest also features an easy-to-clean, protective rubber mat when the work is done. At 66-1/2 inches, the Gold Medal Limited Edition provides easy access to drawers and compartments and an exclusive design feature allows technicians to opt for keyed-alike locks. Once unlocked, extra-deep drawer pulls allow for easy opening.

Snap-on Tools Company

Circle No. 202

Deep Swivel Impact Sockets

For mechanics who require better access to hard-to-reach fasteners, **SK Hand Tool Corporation** has introduced its new line of 3/8" drive deep swivel impact sockets in metric and fractional sizes. Made entirely in the U.S. of premium alloy steel for improved strength and performance, the new deep swivel impact sockets incorporate an independent ball swivel joint design that allows the socket to turn

freely without binding at tight, offset angles. Unlike competitive brands, the new deep swivel sockets offer more interior depth to accommodate taller fastener heads. Like all SK sockets, these new swivel impacts feature the patented SureGrip® design which drives the side of the hex fastener, not the corners, which provides more torque and positive grip on the fastener head avoiding breakage. The 3/8" drive deep swivel impact sockets are available in metric sizes from 10 mm to 19 mm individually, or in 10- and 7-piece sets. They are also available in fractional sizes in 3/8", 7/16", 1/2", 9/16", 5/8", 11/16", and 3/4" versions or in a 7-piece set. Socket sets come packaged in an attractive plastic tray.



Socket sets come packaged in an attractive plastic tray.

SK Hand Tool Corporation

Circle No. 203

Raytek Raynger® ST 3

Raytek has introduced the latest addition to its portable series of infrared thermometers, the Raynger ST3. Priced at \$249 US, the ST3 is the lowest priced noncontact thermometer with laser sighting on the market today. This compact unit features high resolution and accuracy, with dual temperature display and a subzero temperature measurement range of -32 to 400 degrees C (-25 to 750 degrees F) as standard features. The ST3 has tenth degree resolution for precise measurement, and temperature accuracy is one percent of the reading—twice the level of accuracy previously available. The large



backlit display is easy to read and laser sighting provides pinpoint accuracy, especially in dim light conditions. A protective hard case is included with every unit. The Raynger ST may be used in a variety of automotive applications. Automotive technicians can measure inlet and outlet temperatures of catalytic converters, measure exhaust manifold temps to detect misfiring spark plugs, pinpoint the location of radiator core restrictions, detect malfunctioning fuel injectors, check sensor temps to scope readings, troubleshoot brake, electrical and A/C systems. Using a noncontact thermometer will isolate temperature problems fast and cut diagnostic time from minutes to seconds.

For automotive professionals this is great news. When time is an issue, speed and accuracy allow technicians to complete more jobs with fewer come-backs. This translates into satisfied customers and increased profitability.

Raytek
Circle No. 204

Autodiagnos ACE

“ACE” is a computer-based information system that communicates with the **Autodiagnos** Multi-Tester plus. This is accomplished with software, a fiber optic converter box and a fiber optic cable. Maintaining the critical concept of working with a “live data stream” for fuel injection and engine management analysis for European cars and Honda vehicles, the benefit of “ACE” is time savings. Time savings is accomplished through advanced fault finding features and pre and post repair documentation techniques. Selected “ACE” features include:



- “ACE” identifies engine management systems.
- Helps the technician locate the ECU and the proper adapter and cassette for diagnosis of a particular vehicle.
- Upon identifying a faulty signal, “ACE” will automatically present information about the functional principles of the engine management system.
- The faulty signal can be viewed graphically and compared to a “known-good” signal.
- Circuit diagrams, relevant to the faulty signal are automatically presented. All circuit diagrams feature hyper text links that automatically display detailed information about the subject circuit.
- Prior to making the repair, all relevant data, along with other comments about pre-repaired conditions can be saved to a file called “malfunctioning sensor” and a print-out can be made of the test report.
- After repair, the system is then re-checked to confirm that the repair is successful and that no faults are present. The test data may be saved to a new file called “replaced sensor” and a printout of the test report produced.

Autodiagnos
Circle No. 205

Drill Doctor® Precision Drill Bit Sharpener

Darex’s new Drill Doctor® renews dull drill bits to like-new sharpness with pencil sharpener ease. Sharpen



high-speed, cobalt or carbide drill bits with 118° or 135° angles, split-point or masonry bits. The unit features a rugged, portable, powerful motor, diamond wheel, and weighs 5 lbs. The Model 7505P sharpens 3/32 to 3/4-inch bits and costs \$169. The Model 5005P sharpens 3/32 to 1/2-inch bits and costs \$129.

Darex
Circle No. 206

12 Volt 3/8-Inch Driver/Drill With Work Light

Milwaukee Electric Tool Corporation has introduced a value-added drill/work light combination kit with its 12 Volt 3/8” Driver/Drill (Model 0407-22).

The work light features:

- 120° pivoting head for optimal use
- a uniform light pattern to eliminate dark spots and rings
- a polycarbonate lens that resists abrasions and damage due to impact
- glass-reinforced nylon housing and bezel for long life.

The Driver/Drill is supplied with a charger and a 12 Volt 1.3 Amp-Hr. battery that can be charged in one hour. The driver/drill uses two speed ranges: 0-1000 RPM for general purpose drilling and screw driving, and 0-350 RPM when extra torque is required to drive large screws. The drill weighs less than four pounds but still offers the power and performance of heavier, less compact tools, and offers five clutch positions to control fastening torque and screw depth.



Milwaukee Electric Tool Corporation
Circle No. 207

Automotive Video Teams Up With Wire Tap Company

Automotive Video, Inc. (AVI), producers of diagnostic training video cassettes, has teamed up with **Precise Instruments Company**, to market their 8-inch insulation piercing electrical test probe. This is a permanent tool, not a throw-away. The tip can be resharpened and is also replaceable. The probe will accept standard voltmeter tips (.080-inch diameter), phone tips, straight banana plus leads, sheathed and retractable banana test leads. AVI states that reports from their instructors and customers who have used



the probe find it to be invaluable for reaching those hard-to-reach wires in today's cars. For more information on the wire tap probe or video training tapes offered by AVI, you can contact Automotive Video at (800) 718-7246 or visit their web site at <http://www.auto-video.com>.

Automotive Video, Inc.

Circle No. 208

New Grease Gun

Lincoln's new model 1160 air-operated grease gun is the first U.S. made, fully automatic, continuous cycle unit. It features fully automatic operation for continuous grease flow when the trigger is depressed, exclusive air motor design (patent pending) to ensure consistent self-priming and ergonomic design for easy operation even in hard to reach spots.



An exclusive flip-over follower eliminates grease bypass, a heavy duty spring provides prime retention, and there is a locking follower rod for easy loading. The Lincoln 1160 also boasts three way loading with the optional 91108 filler nipple.

Lincoln Automotive Group

Circle No. 209

New Software Puts Vehicle Data On The Big Screen

Viewing live data from three of **OTC's** diagnostic tools takes on an entirely new look with the introduction of GTI (Graphic Tool Interface) software. Technicians can now view sensor data and gas traces in a graphic form, in full, vivid color on their shop PC monitor for accurate diagnosis of vehicle problems. With GTI software on the computer, the technician can select a specific set of up to six different sensors to graph on the screen at one time. Or, up to 63 digital readings can be displayed.



Comparisons can be made at a glance, and those minute trouble spots, drop outs or spikes can be detected easily. The user-friendly Windows format lets the technician scroll through the menus quickly and use the keyboard to input commands. Road test information can be taken back to the shop and downloaded quickly to provide graphic proof of the problem sensors. Users can also print out the infor-

mation in color or black and white, as well as add notes or comments to keep with the customer file. OTC's GTI software is completely compatible with the OTC Enhanced Monitor and Pathfinder '96 and '97, as well as the new OTC Perception lab scope and MicroGas 5-gas analyzer.

OTC

Circle No. 210

Perception Hand-Held Lab Scope

The **OTC** line of diagnostic tools has grown with the introduction of the multi-talented OTC Perception. This low cost, 2-channel lab scope/graphing multi-



meter is designed to keep pace with changes in technology and vehicle systems; updates will be available over the Internet from the OTC Bulletin Board. With the Perception in hand, the technician can easily capture those elusive 'glitches' that occur. Recognizing the difference between normal and

unusual signal patterns, the OTC Perception will save and store the data for detailed analysis and repair. In addition, the OTC Perception has a vehicle-specific database holding information about almost every domestic and most imported vehicles on the road. Accessing the database allows the technician to review wiring diagrams with wire colors, function, and pin numbers, as well as find the recommended test procedure. The OTC Perception gives the technician the ability to test and compare two signals simultaneously. The split screen function displays any two modes at once; multimeter and graph, graph and scope, or scope and multimeter. In the multimeter mode the tester displays up to three measurements at once. It measures volts, ohms, dwell, duty cycle, peak to peak, peak volts, injector pulse width, injector on time, firing kV, burn kV, and burn time. Displaying the screen information on the shop's PC monitor is also possible with the simple addition of a cable (No.3341-03) and OTC's new GTI (Graphic Tool Interface) software on the shop PC. Viewing information on the screen is made easy because of its large size. Measuring 3 x 3-3/4-inch, the screen is clearly visible under even adverse lighting conditions. The OTC Perception comes packed as a set, No.3820, complete with a set of color-coded leads, a secondary ignition lead, and a 110 volt AC wall adapter.

OTC

Circle No. 211

Universal Pulley Holder

A great time saver, this unique tool from **KD Tools**



is designed to trap and hold bolt-on pulleys by the mounting bolts on most applications. When used in connection with fan clutch wrenches it is especially useful for removing and replacing thermostatic fan assemblies while eliminating the need for various-sized holding wrenches. Applications include: Ford trucks with 2.8L, 2.9L, 3.0L, 4.0L, 4.9L and 5.0L engines; Dodge trucks with 3.9L, 5.2L, 5.9L, 8.0L and V10 engines; GM trucks with 4.3L, 5.0L and 5.7L engines and Jeeps with 5.2L engines. A Three Piece Fan Clutch Wrench Kit, including the new Universal Pulley Holder #3471 and KD fan clutch wrenches #3422 and #3136-76 may be used to remove and replace thermostatic fan assemblies while eliminating the need for various-sized holding wrenches. Applications are the same as those for the Universal Pulley Holder #3471.

KD Tools
Circle No. 212

New Technology In Leak Detection Lamps

Tracer Products introduces a major advance in automotive leak detection with their new Tracerline® TITAN TP-8000 and TP-8200 UV/Blue lamps. Because of a new breakthrough filter technology (patent pending) and revolutionary lamp design, these new lamps offer users two major features that are not possible with other 12-volt lamps:

- They produce up to 30 times more useable leak detection light—even more in many cases, and;
- They produce the light exactly within the range of every fluorescent dye on the market today!
So, there is more of the light the technician needs to fluoresce all dyes.

The result? The TP-5000 and TP-8200 make all manufacturers' fluorescent dyes glow brighter than ever before possible! "Light years ahead" of the competition, the TITANs make vehicle leaks much easier to locate. The TITAN lamps are UL listed, C-UL listed and CE approved. The TP-8000 and TP-8200 come with 14-foot (4.3 m) cords with alligator clips to connect to any 12 volt automo-



tive battery or other 12-volt DC power supply. UV-absorbing/fluorescence-enhancing glasses come with every lamp. Kits are available which include a lamp, glasses, 8-oz. spray bottle of GLO-AWAY dye cleaner/remover, and a custom-molded plastic carrying/storage case.

Tracer Products
Circle No. 213

SpectraGas 5 Gas Emission Analyzer

MPSI's SpectraGas is a portable 5-gas emission analyzer engineered for testing gasoline engine performance and diagnosis. It is used as a diagnostic tool by automotive service technicians to diagnose and troubleshoot engine and emission related problems on



gasoline vehicles. The compact stand-alone design features an easy-to-read back lit display for measuring Hydrocarbons (HC), Carbon Monoxide (CO), Nitric Oxide (NO), Carbon Dioxide (CO₂), Oxygen (O₂), Air to Fuel Ratio (AFR), engine RPM, Oil Temperature and more. Emission data may be displayed in percent concentration, parts-per-million (PPM) and grams per mile (estimated).

MPSI
Circle No. 214

Medium-Duty Mechanics' Hand Tools



Wright Tool Company, a manufacturer of socket and combination wrenches, has introduced a new line of products under the COUGAR™ name.

The American-made, medium-duty line of hand tools is manufactured to Wright Tool's high standards, but priced in the mid-level range. The new line is designed especially for contractors and maintenance workers who don't need a premium line, but still want high-quality tools that they can depend on. The tools carry a lifetime guarantee. The COUGAR line is comprised of more than 300 tools, including a full line of 1/4", 3/8" and 1/2" socket wrenches in standard and deep, inch and metric sizes; all required ratchets, adapters and extensions; as well as combination wrenches in inch and metric sizes.

Wright Tool Company
Circle No. 215

Phoenix Injector™

Phoenix Systems has announced its new line of Phoenix Injectors—professional tools designed to bleed clutch and brake systems, and much more! Never again will bleeding clutch systems in Ford Ranger, Ford F-Series, Jeep or GM trucks be a problem. Using the patented Reverse Fluid Injection (RFI) system, fluid is injected at the slave forcing air up through the system and out the master cylinder reservoir. For difficult jobs, the injector can be used to employ the Pulse Generator technique to overcome surface tension of trapped air in the system. Standard methods of pressure and vacuum bleeding can also be performed. Unlike other bleeding tools, the Phoenix Injector™ is brake fluid compatible, thereby allowing the injector to come in direct contact with the fluid. Each stroke injects brake fluid into or out of the brake or clutch system, making this an effective flushing tool. Phoenix Systems recommends flushing contaminated systems before performing RFI on ABS systems.



Phoenix Systems
Circle No. 216

TRANSTECH Transmission Service System

Designed to exchange virtually all of the used automatic transmission fluid in a vehicle's transmission, the new TRANSTECH Transmission Service System can increase a shop's profits by reducing the time it takes to do the service to approximately 10 minutes. This new turnkey transmission service system from **MotorVac Technologies, Inc.** is easy to use and is compatible with most foreign and domestic vehicles. TRANSTECH connects through transmission cooler lines and provides a clean, "environmentally-friendly" and systematic approach to servicing automatic transmissions. The unit will flush virtually all of the old transmission fluid and replace it with the new fluid while the engine is idling. Normally, when a technician drains the transmission, the torque converter, clutch drums and the valve body will retain



large amounts of old, burnt and dirty fluid. By allowing the vehicle's transmission pump to flush out the old fluid while the TRANSTECH system pumps in

new fluid, virtually 100 percent of the old fluid can be replaced. The TRANSTECH also allows for easy transmission filter replacement. Using the automatic "drain pan" switch to flush out the used transmission fluid, pan removal and filter replacement becomes cleaner, easier and safer. Product features and benefits include:

- 12-volt battery powered—makes the unit portable,
- 42 quart "clean fluid" reservoir—allows for multiple services,
- Audible low fluid alarm—a good safety device,
- "Clean" and "Dirty" ATF flow meters—a great customer visual aid to show them the dirty fluid that is coming out of the transmission.

MotorVac Technologies, Inc.
Circle No. 217

FI Pressure Test Kit

S&G Tool Aid has introduced a Comprehensive Fuel Injection Pressure Test Kit for checking gas fuel injection systems on virtually any car or truck. This versatile kit tests multi-port, throttle body and C.I.S. K-Jetronic fuel injection systems. It features two gauges, one with a hang-up hook for 0-100 psi (0-7 BAR) applications and the other 0-50 psi (0-3.5 BAR) for accurate



low pressure readings. The bleed-off valve with 6' of translucent hose safely depressurizes systems after completion of testing. There are adapters for special applications, assorted hoses, hose barb fittings and clamps. All components connect together easily for fast hook-ups. The kit is supplied in a durable plastic storage case with numbered positions to easily identify all components. A complete instruction manual is included.

S&G Tool Aid Corp.
Circle No. 218

Brake Fluid Tester

Shark Industries offers its new 9000 Brake Fluid Tester. The tester boils a small amount of fluid and displays the boiling point on an LCD in less than a minute. Unlike other testers, the Shark unit can be placed in the master cylinder at up to a 45



degree angle, turned on and left until it displays the results. The technician can then perform a brake fluid flush if the fluid is beyond 2 percent water contamination. The tester can be checked for proper calibration with distilled water. The unit is powered by leads which attach to the battery. Two other models are available: a tester with a rechargeable battery and a high temperature unit (up to 650 degrees) for testing fluids in some European Ford vehicles.

Shark Industries
Circle No. 219

Tool Carts

Waterloo Industries offers a complete line of professional tool carts. The new Traxx Series 12-Drawer Tool Cart (TRX1412) features all full-extension ball



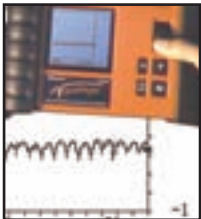
bearing drawers, large casters, handle/can holder and MDF work surface. Waterloo's Pro Series WI-1512 is also a 12-drawer, 41" cart, but it has ball bearing slides on the top full-width drawer and friction slides on all other drawers. Both carts are sized to fit 40"

tool chests on top, if desired. The BOSS 6-Drawer Cart (BSX1406) is a 40" tool cart specially designed to store body shop tools. Also new at Waterloo is the Pro Series 52" Mobile Tool Cart with full-width ball bearing top drawer and 12 full-extension drawers with standard slides.

Waterloo Industries
Circle No. 220

Scope Accessories

Automotive Electronics Services (AES) offers four added-value accessories for Snap-On Vantage users. Because this popular diagnostic meter does not offer AC input coupling, this makes it difficult to troubleshoot alternator ripple, says AES. The problem is solved with the AES AC Filter Lead which filters out the DC (steady) portion of the signal so technicians can concentrate on the AC (always changing) signal. The AC Filter Lead can also be used to perform cranking compression tests. The Snap-On Vantage does not include shielded test leads. When noise is a problem, AES 03-60 Shield Leads clean up the signal. The lead includes two 5-



way piercing clips. Scope leads can be shared using the AES 08-86 banana plug with a BNC adapter. The product converts meter inputs from banana plugs to BNC connectors, allowing the operator to use BNC-style lab scope leads with the meter. With AES *Wave!* Windows-based software, users can capture screens from the Snap-On Vantage (and many other scopes) into an easy-to-use database which can be saved, converted to graphics, printed, etc.

Automotive Electronics Services
Circle No. 221

Multi-Angle Ratchet

Trucraft Tools offers its six-piece Spline Drive Multi-Angle Ratchet sets in both 3/8" and 1/4"



versions. The ratchet sets permit a multitude of adjustable configurations at various angles while the flex handle allows 180 degree rotational positions. The tools are particularly effective on hard-to-reach fasteners.

Each set includes a reversible ratchet head, flex handle, two offset joints, a 2" extension and spline drive adapter packaged in a see-through tray.

Trucraft Tools
Circle No. 222

Drill Kit

Snap-on Tools offers the Blue-Point ETBT9600KC Cordless T-Handle Drill Kit. The even weight distribution provided by the T-handle shape creates a balanced feel, enabling technicians to use it for longer periods, says Snap-on. The 3/8" keyless chuck lets the operator change bits quickly and easily. A six-



position torque setting allows easy selection of the right torque for the job — as high as 110 lb. in. The forward/reverse lever is conveniently located for one-hand operation. The drill features a no-load drill speed of zero to 1,000 rpm and

a no-load drive speed of zero to 333 rpm. A convenient plastic carrying/storage case is included. It holds the drill and its quick one-hour charger, and has room for an optional second nickel cadmium 1.3 Ah battery pack.

Snap-on Tools
Circle No. 223

Work Light

Central Lighting Div., Central Tools, Inc. offers the FeatherLite Work Light which provides even lighting over a wide work area. The FeatherLite features an energy efficient 15 watt bulb and internal shock absorbers to provide outstanding impact resistance. The light is available with 25' and



50' cord lengths with or without cord reel. The swivel end hook provides additional versatility by permitting the light to be directed to the primary work area.

Central Tools, Inc.
Circle No. 224

Asian Diagnostic Software

Vetronix Corporation has announced that its OEM-validated, dealer-level diagnostic software for Honda, Toyota, Suzuki and Kia applications is now being offered to aftermarket service providers for the first time. Vetronix says that over 40 percent of new vehicles manufactured worldwide are serviced at the dealer level with diagnostic products it developed. Through agreements reached with OEMs, the company is now able to offer ScanTest Software for Honda/Acura, Toyota/Lexus, Suzuki and Kia vehicles. All four software programs run on the Vetronix MasterTech Tester.



Vetronix Corporation
Circle No. 225

Diagnostic Workstation

Interro Systems' PDW100 Personal Diagnostic Workstation gives technicians the ability to perform comprehensive engine analysis both on the road and in the bay. It includes a complete hand-held engine and ignition analyzer with 4 channel lab scope and 4 channel/6 panel multimeter, a lockable roll-around cart, portable 4 gas emission analyzer, and OBD-II scan tool. Interro says the workstation gives the feel of a "big box system" at a fraction of the cost, plus the benefits of portable testing.



Interro Systems
Circle No. 226

Universal Hose Pliers

Schley Products, Inc. has developed pliers specially designed to grip heater hoses in confined areas and break them loose from corroded fittings. SP Tools' Universal Hose Pliers fit 1/2" to 3/4" hose. This set of pliers has the ability to power rotate the hose to break it loose from its fitting. In the same motion, the pliers can be rotated 90 degrees to easily pull the hose from the fitting.



Schley Products, Inc.
Circle No. 227

EIM Tester

Innova Electronics Corp. offers its countertop EIM Tester for testing OEM and aftermarket ignition modules. The unit includes 24 custom molded cables and can accurately test nearly all of the most commonly replaced ignition modules. It's the only tester on the market that can test the inductive modules used by most import car manufacturers, says Innova, and it's easily upgraded to test new modules as they are introduced.



Innova Electronics Corp.
Circle No. 228

Tight Spot Tool Kit

Sidewinder Products Corp. offers the 65-piece Tight Spot Tool Kit featuring three patented specialty tools together with a complete range of sockets, drivers, bits and accessories stored in a professional carrying case. Sidewinder Speedwrench combines the capabilities of a standard reversing ratchet with



those of a 90 degree speedwrench. Lockit Socket locks the socket onto the extension, holding up to 350 lbs. Spring U-Joint incorporates a spring fitting that retains the U-joint's semi-rigid form for insertion into tight spots, without limiting the flexibility of the swiveling joints.

Sidewinder Products Corp.
Circle No. 229

Tube Tool



Valco Cincinnati offers Tube-Grip, a handy tool for improving the dispensing of materials from flexible tubes. Tube-Grip provides greater accuracy and more constant pressure than squeezing tubes by hand. Valco

recommends using it with its RTV silicone products.

Valco Cincinnati
Circle No. 230

Flexible Scope

MDS Inc. has announced the release of a new state-of-the-art Flexible Fiberscope. According to MDS, the new PS2000 offers features not available on even the most expensive scopes, yet it is the lowest priced scope of its kind in the industry.

MDS Inc.
Circle No. 231



Terminal Repair Kit

Kent-Moore/SPX Corp. has introduced a new and updated Terminal Repair Kit (J-38125-B). This updated kit now includes five complete terminal trays, five standard removal tools, three crimp tools and an ultratorch, providing technicians with all the right tools for wiring harness repairs. Individual terminal trays and their contents (terminals, clips and sleeves) are also available in individual packages for inventory replenishment.

Kent-Moore/SPX Corp.
Circle No. 232



Tool Case

Top Drawer Products offers a Tool Case which displays up to 200 tools in a cupboard-type design which may be placed on top of a tool cart.

The case uses a minimum of space and maximizes tool accessibility. The counterbalance feature helps prevent tip-over, while a sturdy paddle latch ensures security.

Top Drawer Products
Circle No. 233



A/C Vacuum System

TIF Instruments, Inc. offers the TIF9100 Electronic Vacuum System, a three-in-one tool which performs all functions needed to properly evacuate, dehydrate and leak check any system. It replaces a standard vacuum pump, vacuum gauge and leak detector. The compact diagnostic system works on both R-12 and R-134a systems. The operator simply hooks it up to any A/C or refrigeration system, turns it on and periodically checks the evacuation process — no guesswork. A newly designed valve allows you to isolate the system for leak checking, and an oil contamination sensor tells you when to change the oil. A built-in automatic venting system and on/off switch combination prevents rotor lock-up, a common problem with most vacuum pumps.

TIF Instruments, Inc.
Circle No. 234



Mini-Adapter Set

Moody now offers a complete selection of precision miniature tools recommended for use with the optional Utica torque screwdriver or other 1/4" hand/cordless driver application. Blades are hardened, black finished alloy steel. The 35-piece Mini-Adapter Tool Set includes an insert bit adapter, a power drive bit adapter, and many sizes of slotted, Phillips, Japanese Cross Point, Torx/Tamper Torx, hex and nutdriver blades.

Moody
Circle No. 235



Battery Analyzer

Midtronics' MicroPro 815 Digital Battery Analyzer has been designated as an essential tool by Lexus as part of a new battery testing program. Technicians just input a battery's stock number or CCA/CA rating into the MicroPro 815's

digital pad, and within seconds they get an accurate reading of not only the battery's state of charge, but more importantly, battery condition. If the unit delivers a "Replace" reading, technicians also receive a special warranty code to be used on all paperwork. With a Midtronics conductance tester, technicians can also determine immediately when the vehicle's battery is good but the charging system needs attention.

Midtronics
Circle No. 236

